

Sample Name: Glucagon-Like Peptide (GLP) II, human  
 Cat No. : RP10769  
 Lot No. : E7236720B  
 Time Processed: 9:39:12 AM  
 Month-Day-Year Processed :03/03/2020

Pump A : 0.065% trifluoroacetic in 100% water (v/v)  
 Pump B : 0.05% trifluoroacetic in 100% acetonitrile (v/v)  
 Total Flow: 1 ml/min  
 Wavelength: 220 nm

<<LC Time Program>>

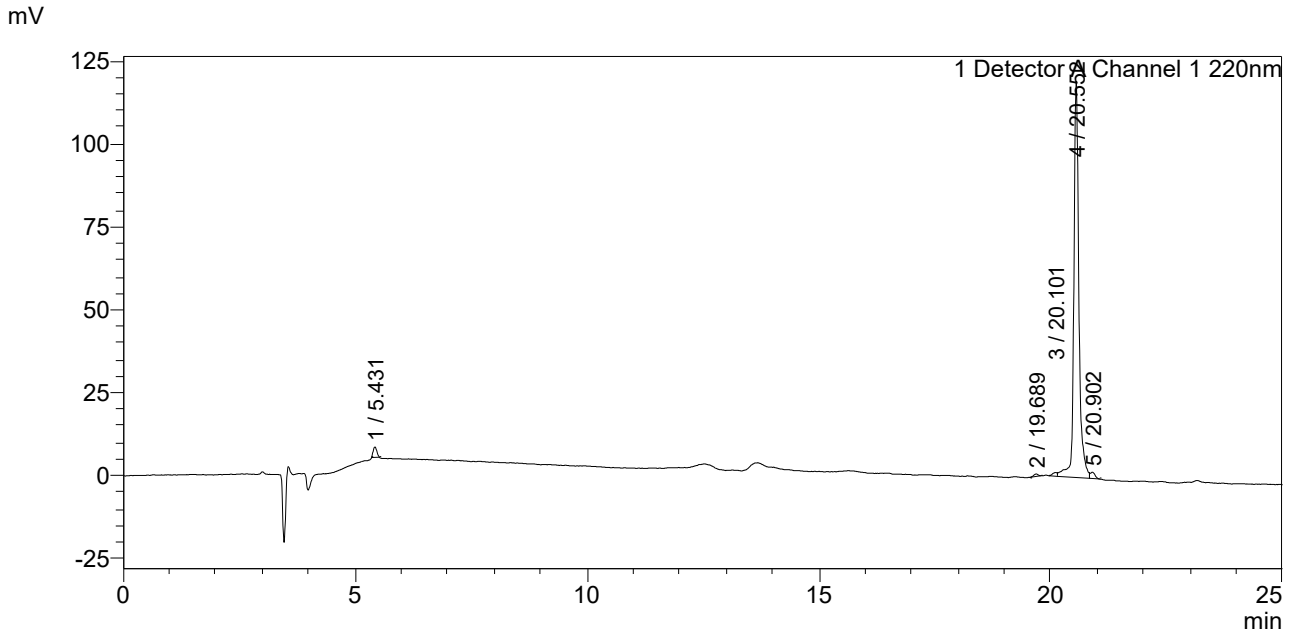
Time	Module	Command	Value
0.01	Pumps	Solvent B Conc.	5
25.00	Pumps	Solvent B Conc.	65
25.01	Pumps	Solvent B Conc.	95
27.00	Pumps	Solvent B Conc.	95
27.01	Pumps	Solvent B Conc.	5
33.00	Pumps	Solvent B Conc.	5
33.00	Controller	Stop	

<<Column Performance>>

<Detector A>

Column : Alltima™ C18 4.6 x 250 mm  
 Equipment: ZJ19010325

<Chromatogram>



<Peak Table>

Detector A Channel 1 220nm

Peak#	Ret. Time	Area	Height	Area%
1	5.431	17003	3122	1.788
2	19.689	5148	754	0.542
3	20.101	7406	1073	0.779
4	20.552	908843	119329	95.595
5	20.902	12322	1911	1.296
Total		950722	126190	100.000