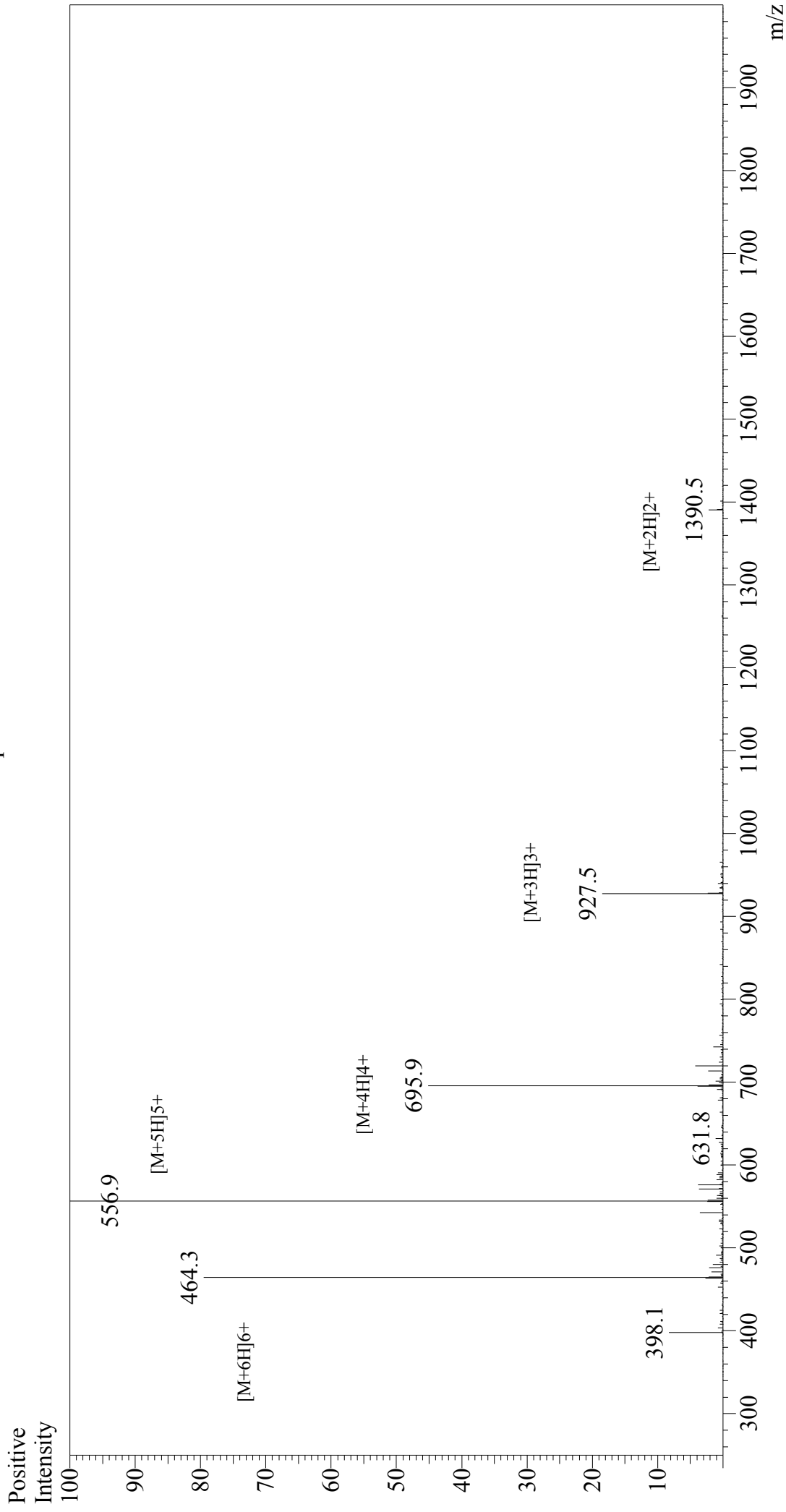


Mass Spectrum



Sample Information

Acquired by : Gary
Month-Day Processed : 09/27/18
Time Processed : 16:27:12
Injection Volume : 0.2
Sample Name : LAH4
Cat. No. : RP20096
Lot. No. : PE4341809
Theoretical MW : 2779.47
Observed MW : 2779.5

Interface : ESI
Nebulizing Gas Flow : 1.5L/min
CDL Temp : 250°C
Block Temp : 200°C

Equipment : GK11010007
Interface Bias : +4.5 kV
Drying Gas Flow : 5 L/min
T.Flow : 0.2 ml/min
B.conc : 50%H₂O/50%MeOH