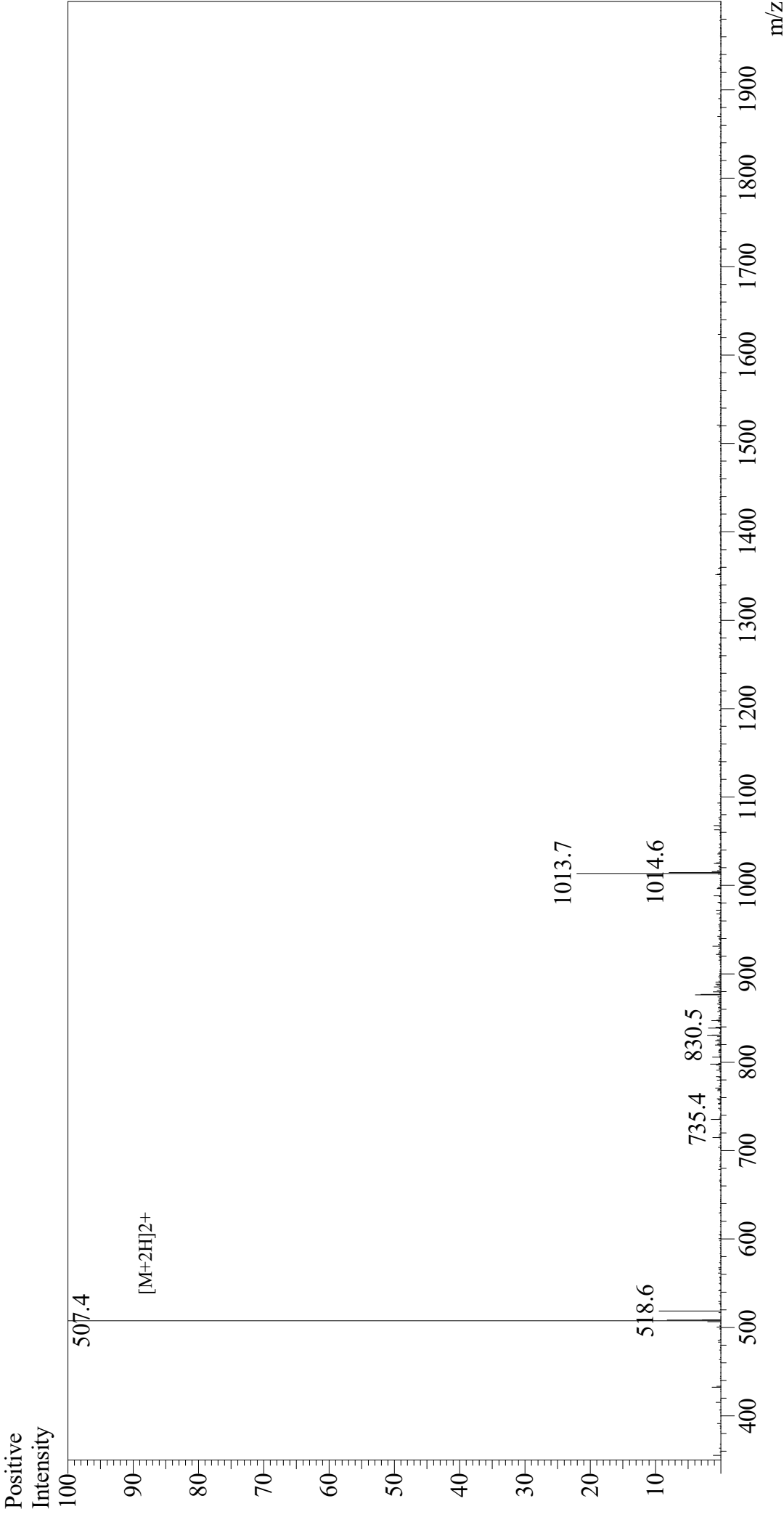


Mass Spectrum



Sample Information
Month-Day Processed : 06/04/21
Time Processed : 18:48:12
Injection Volume : 0.3
Sample Name : DYKDDDDK Peptide
Cat.No : RP10586
Lot.No : E6880421F
Theoretical MW : 1012.97
Observed MW : 1012.8

Interface : ESI
Nebulizing Gas Flow : 1.5L/min
CDL Temp : 250
Block Temp : 200

Equipment : GK11010007
Interface Bias : +4.5 kV
Drying Gas Flow : 5 L/min
T.Flow : 0.2 ml/min
B.conc : 50% H2O/50% MeOH