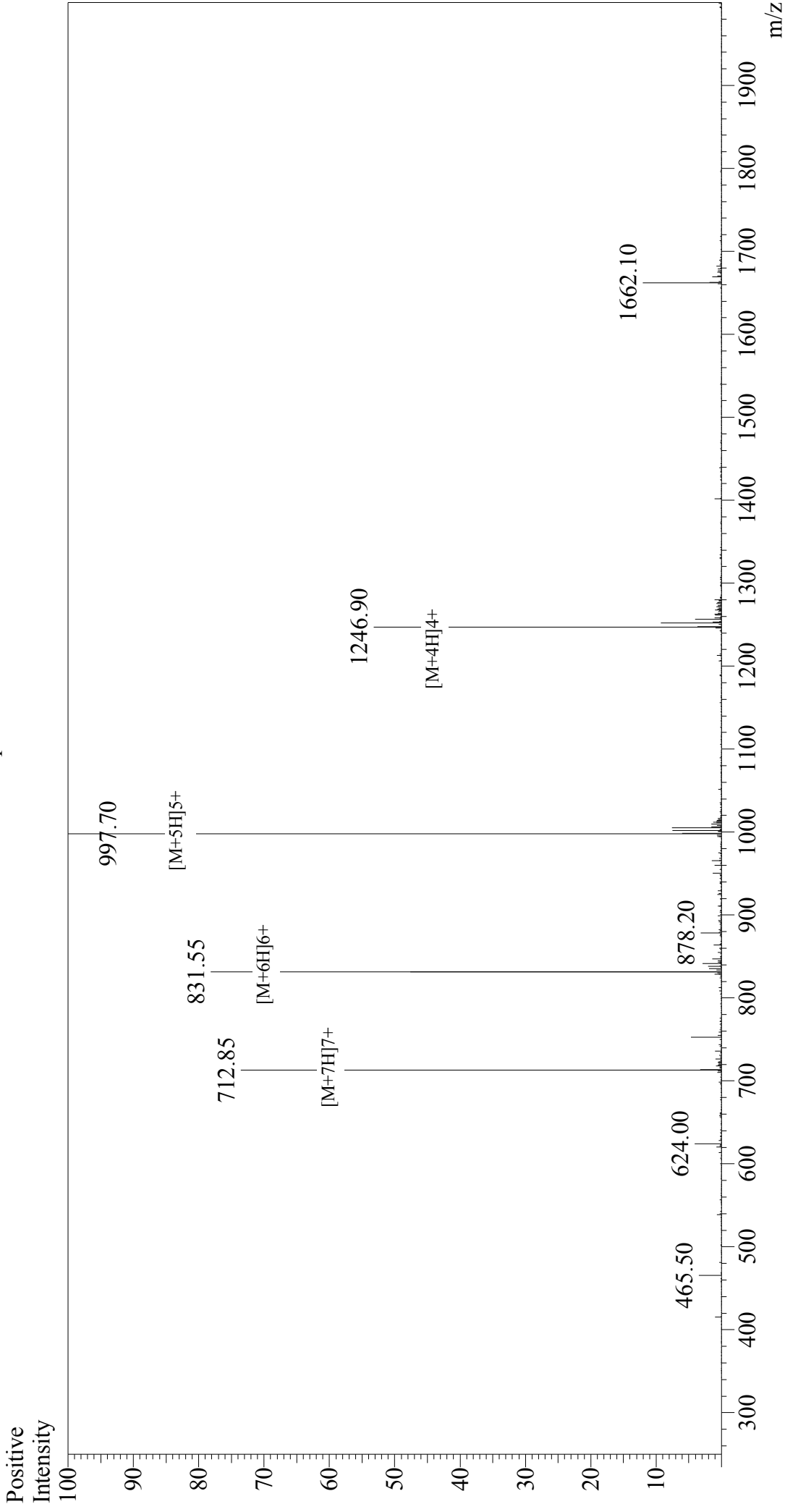


# Mass Spectrum



### Sample Information

Acquired by : Gary  
 Month-Day Processed : 12/07/17  
 Time Processed : 16:09:37  
 Injection Volume : 0.2  
 Sample Name : Gastric Inhibitory Peptide (GIP), human  
 Cat. No. : RP10795  
 Lot. No. : PE2041711  
 Theoretical MW : 4983.60  
 Observed MW : 4983.50

Interface : ESI  
 Nebulizing Gas Flow : 1.5L/min  
 CDL Temp : 250°C  
 Block Temp : 200°C

Interface Bias : +4.5 kV  
 Drying Gas Flow : 5 L/min  
 T.Flow : 0.2 ml/min  
 B.conc : 50% H<sub>2</sub>O/50% MeOH