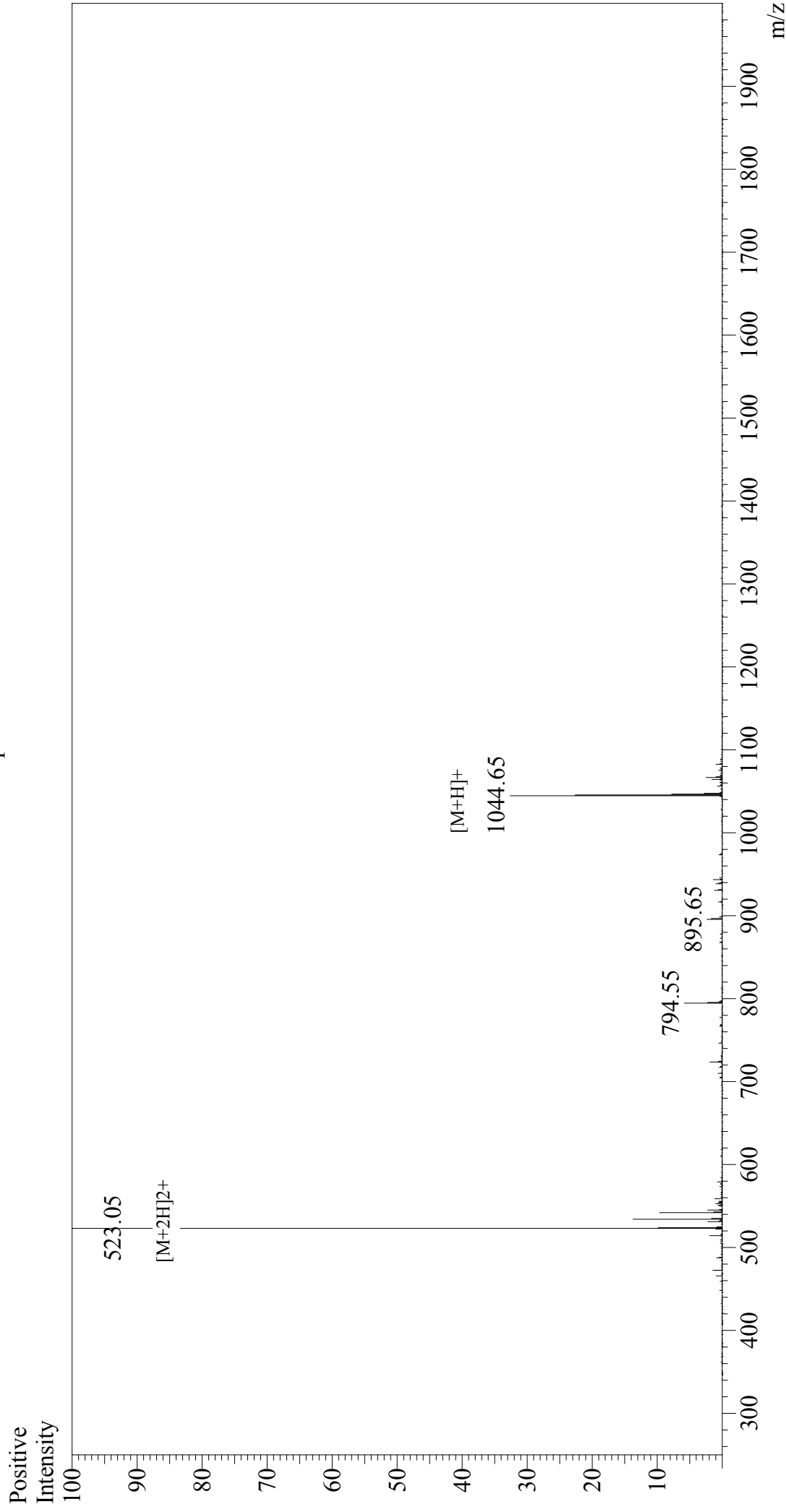


# Mass Spectrum



## Sample Information

Acquired by : Gary  
Month-Day Processed : 12/23/17  
Time Processed : 12:36:39  
Injection Volume : 0.2  
Sample Name : LCMV gp33-41  
Cat. No. : RP20257  
Lot. No. : PE2291712  
Theoretical MW : 1044.25  
Observed MW : 1044.10

Interface : ESI  
Nebulizing Gas Flow : 1.5L/min  
CDL Temp : 250°C  
Block Temp : 200°C

Interface Bias : +4.5 kV  
Drying Gas Flow : 5 L/min  
T.Flow : 0.2 ml/min  
B.conc : 50%H<sub>2</sub>O/50%MeOH