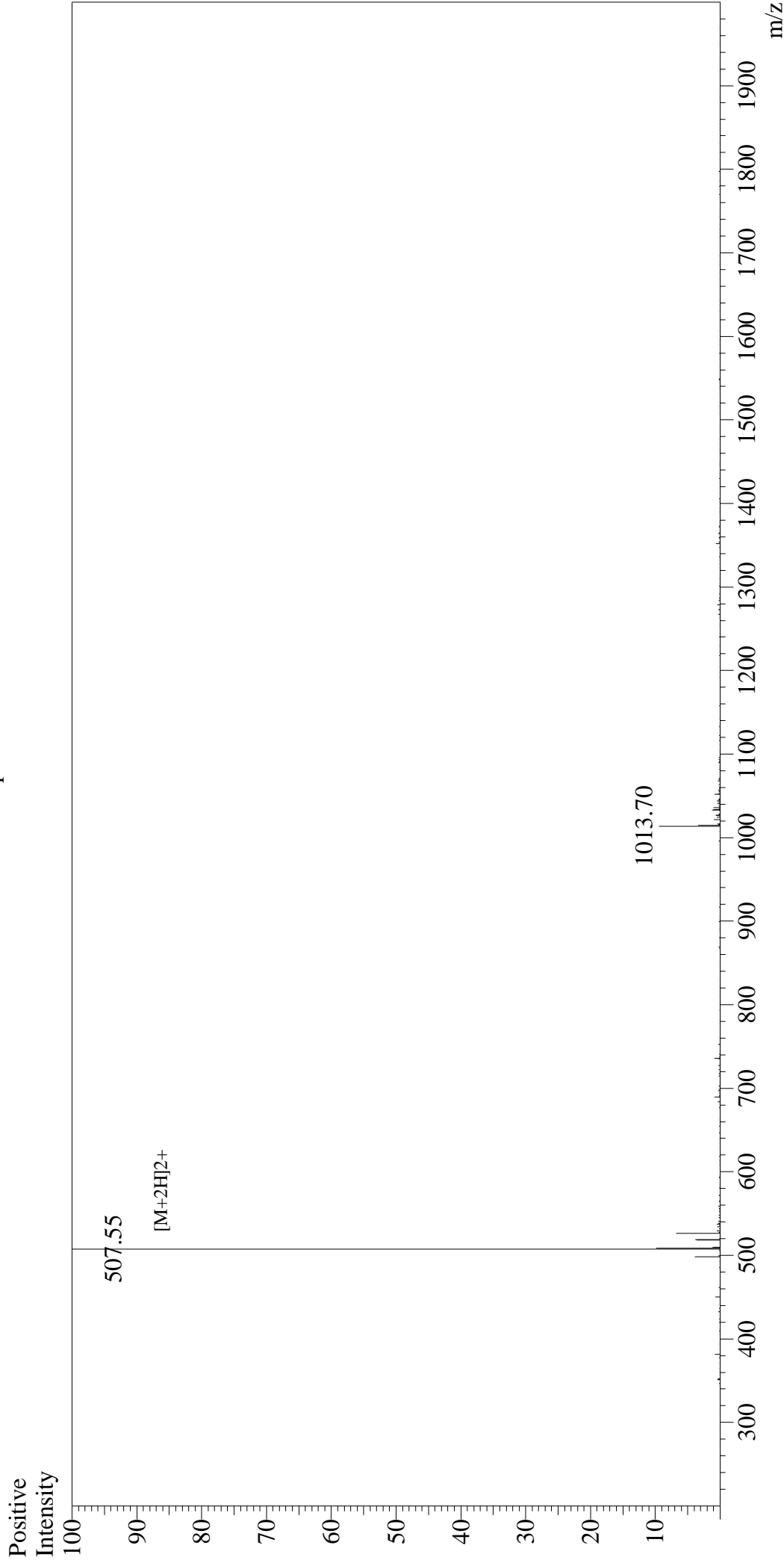


# Mass Spectrum



## Sample Information

User : Gary  
Month-Day Processed : 02/09/18  
Time Processed : 13:48:24  
Injection Volume : 0.2  
Sample Name : DYKDDDDK Peptide  
Cat No. : RPI0586  
Lot No. : PE4801802  
Theoretical MW : 1012.97  
Observed MW : 1013.10

Interface : ESI  
Nebulizing Gas Flow : 1.5L/min  
CDL Temp : 250°C  
Block Temp : 200°C

Interface Bias : +4.5kV  
Drying Gas Flow : 5 L/min  
T.Flow : 0.2ml/min  
B.conc : 50%H2O/50%MeOH