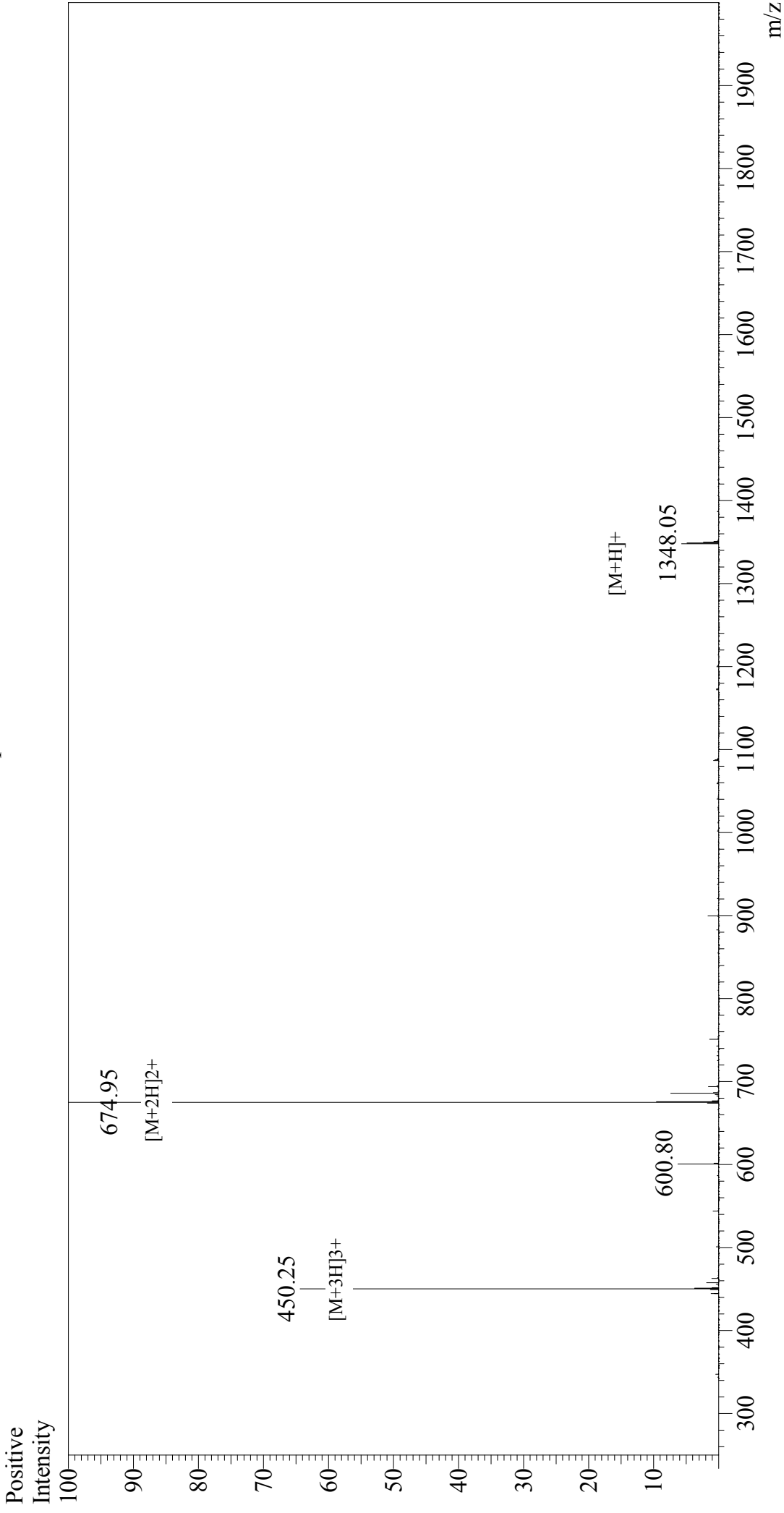


# Mass Spectrum



## Sample Information

Acquired by : Gary  
Month-Day Processed : 03/03/18  
Time Processed : 12:12:08  
Injection Volume : 0.2  
Sample Name : Substance P  
Cat No: RPI0178  
Lot No: PE1391802  
Theoretical MW : 1347.63  
Observed MW : 1347.90

Interface : ESI  
Nebulizing Gas Flow : 1.5L/min  
CDL Temp : 250°C  
Block Temp : 200°C

Interface Bias : +4.5 kV  
Drying Gas Flow : 5 L/min  
T.Flow : 0.2 ml/min  
B.conc : 50%H2O/50%MeOH