

Sample Name : β 2-Amyloid (25-35)
 Cat. No. : RP10008
 Lot. No. : PE8321601

Pump A : 0.065% trifluoroacetic in 100% water (v/v)
 Pump B : 0.05% trifluoroacetic in 100% acetonitrile (v/v)
 Total Flow: 1 ml/min
 Wavelength: 220 nm

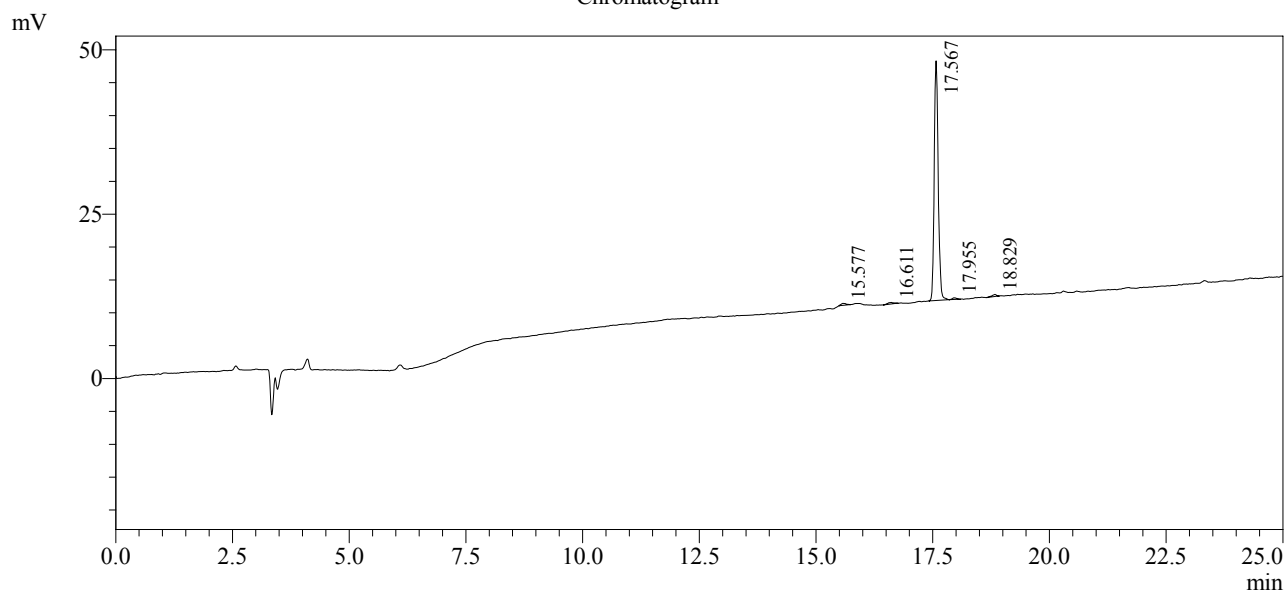
| Time | Unit | Command | Value | Comment |
|-------|------------|---------------|-------|---------|
| 0.01 | Pumps | Pump A B.Conc | 5 | |
| 25.00 | Pumps | Pump A B.Conc | 65 | |
| 25.01 | Pumps | Pump A B.Conc | 95 | |
| 31.00 | Pumps | Pump A B.Conc | 95 | |
| 31.01 | Pumps | Pump A B.Conc | 5 | |
| 40.00 | Pumps | Pump A B.Conc | 5 | |
| 40.01 | Controller | Stop | | |

<<Column Performance>>

<Detector A>

Column : AlltimaTM C18 4.6 x 250 mm

Chromatogram



1 Det. A Ch1 / 220nm

Peak Table

Detector A Ch1 220nm

| Peak# | Ret. Time | Area | Height | Area % |
|-------|-----------|--------|--------|---------|
| 1 | 15.577 | 2306 | 297 | 1.030 |
| 2 | 16.611 | 2158 | 226 | 0.964 |
| 3 | 17.567 | 215552 | 36435 | 96.272 |
| 4 | 17.955 | 1647 | 251 | 0.736 |
| 5 | 18.829 | 2238 | 313 | 0.999 |
| Total | | 223901 | 37523 | 100.000 |