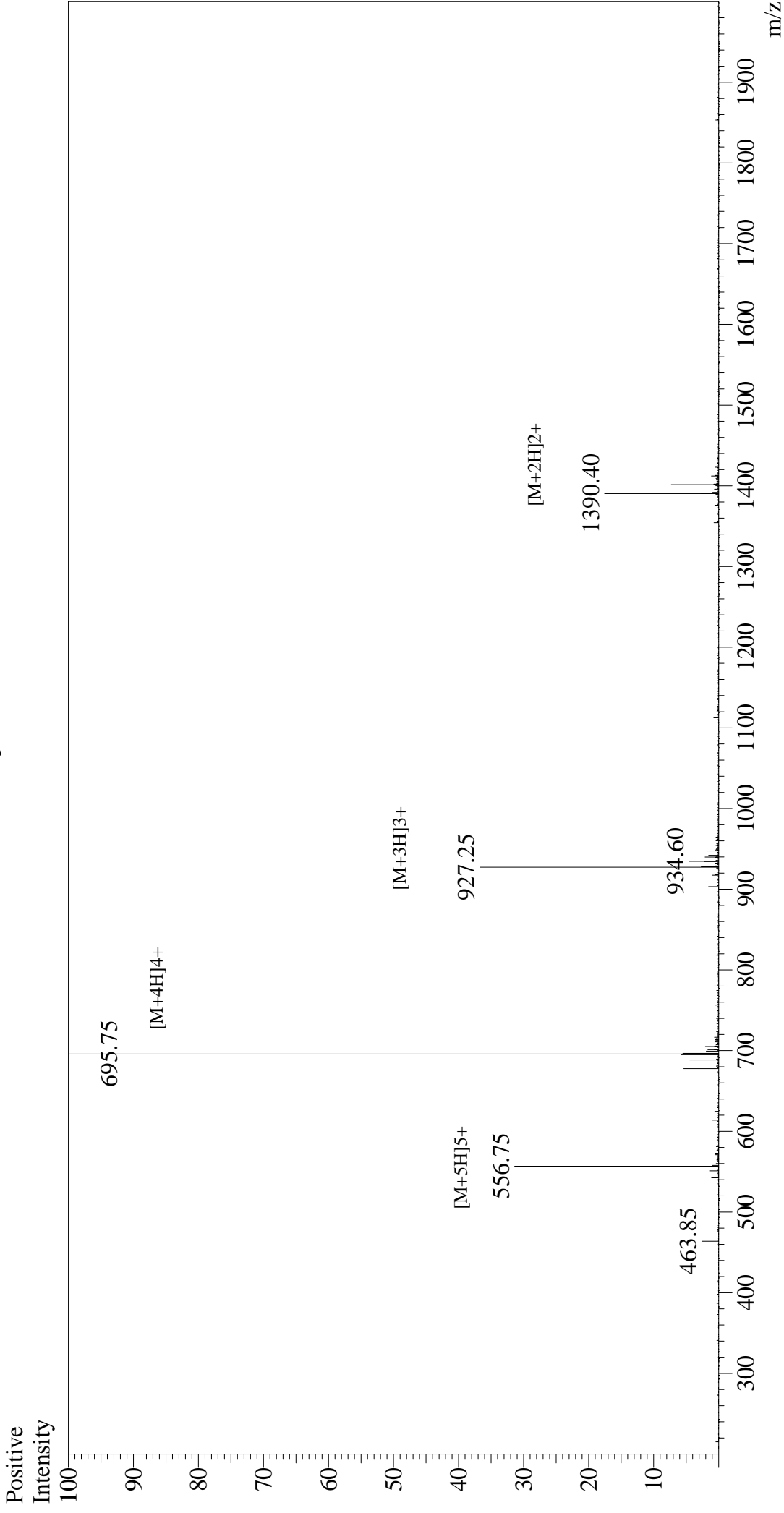


Mass Spectrum



Sample Information

Acquired by : Gary
Month-Day Processed : 07/17/16
Time Processed : 14:25:34
Injection Volume : 0.2
Sample Name : LAH4
Cat. No. : RP20026
Lot. No. : PE5621607
Theoretical MW : 2779.47
Observed MW : 2779.00

Interface : ESI
Nebulizing Gas Flow : 1.5L/min
CDL Temp : 250°C
Block Temp : 200°C

Interface Bias : +4.5 kV
Drying Gas Flow : 5 L/min
T.Flow : 0.2 ml/min
B.conc : 50%H2O/50%MeOH