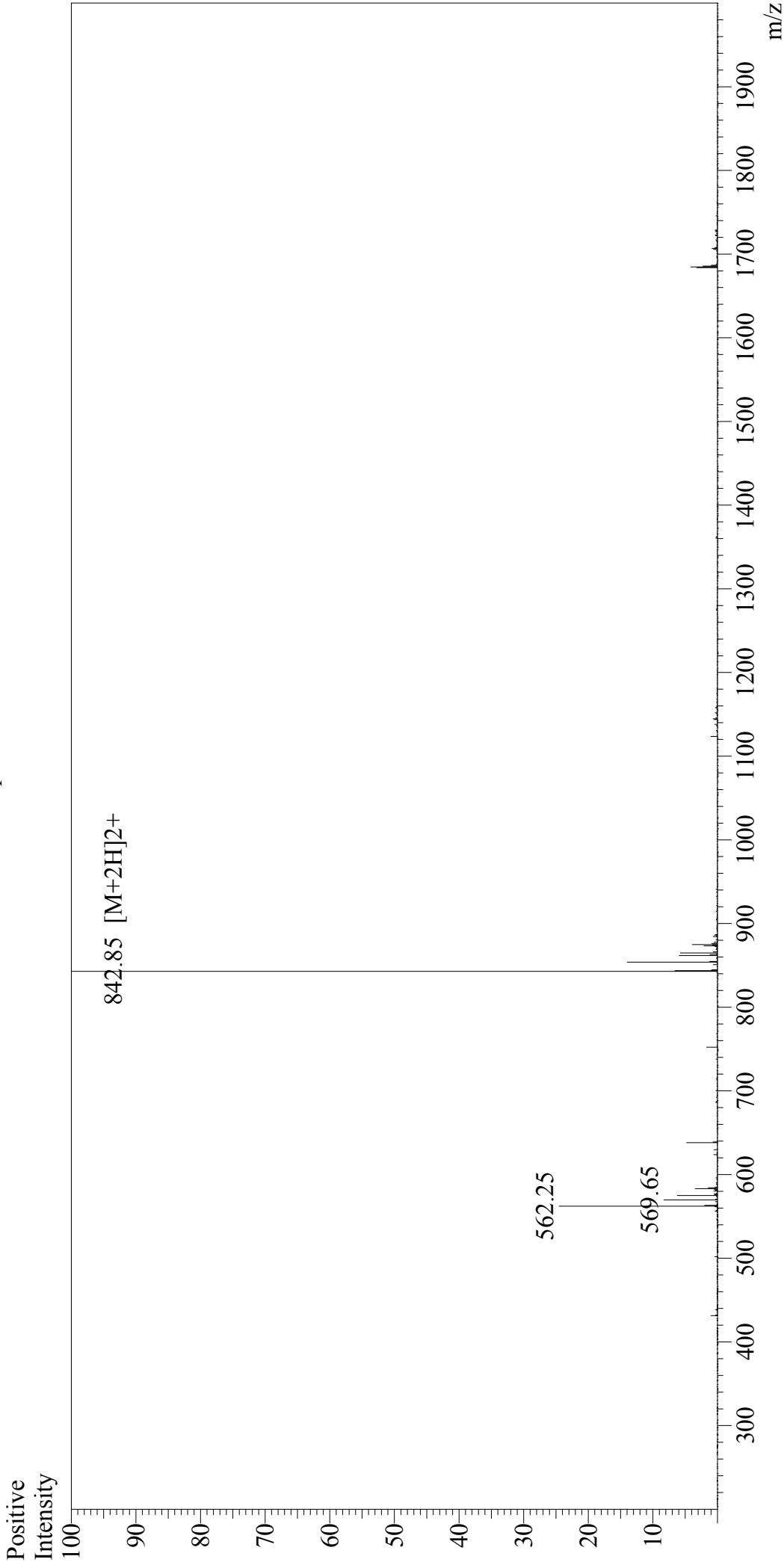


Mass Spectrum



Sample Information	Interface	:ESI	Interface Bias	:+4.5kV
User :	Nebulizing Gas Flow	:1.5L/min	Drying Gas Flow	:5 L/min
Month-Day Processed :	CDL Temp	:250°C	T.Flow	:0.2ml/min
Time Processed :	Block Temp	:200°C	B.conc	:50%H2O/50%MeOH
Injection Volume :				
Sample Name :				
Cat No. :				
Lot No. :				
Theoretical MW :				
Observed MW :				

α-Factor Mating Pheromone, yeast
RP01002
PE8361605
1683.98
1683.70