

## CERTIFICATE OF ANALYSIS

### Product Information

Product Name	CHO-K1/Gα15/ADORA1
Cat. No.	M00324
Lot No.	B30091705
Host Cell:	CHO-K1
Target Gene:	ADORA1
Quantity:	2 vials of frozen cells
Shipping Condition:	Dry Ice
Recommended Storage Condition:	Liquid Nitrogen

### Stable Cell Line Information

**Recommended Cell Culture Medium:** F12 + 10% FBS + 200 µg/ml Zeocin

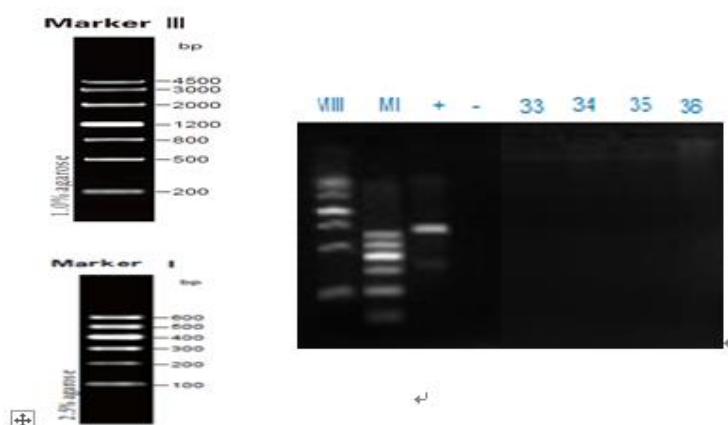
**Freeze Medium:** 45%FBS, 45%F12, 10% (V/V) DMSO

**Application:** Functional assay for ADORA1

Test Item	Specification	Result
Mycoplasma 160	Negative.	Negative., Appendix 1
Functional assay	Calcium assay	EC <sub>50</sub> =26.32 nM

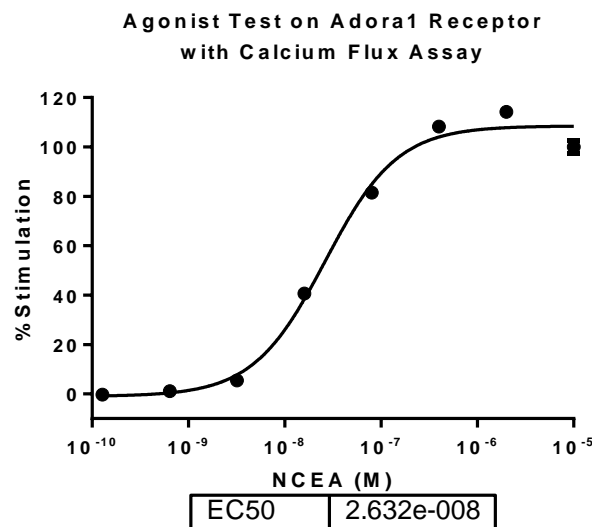
### Appendix

#### Appendix 1: Mycoplasma 160



Lane M	DNA Marker
Lane +	Positive control
Lane -	lysis buffer (negative control)
Lane36	CHO-K1/Gα15/ADORA1

860 Centennial Ave., Piscataway, NJ 08854, USA

**Appendix 2 : Calcium assay**


**Figure 2.** NECA-induced concentration-dependent stimulation of intracellular calcium mobilization in CHO-K1/ADORA1 and CHO-K1 cells. The cells were loaded with Calcium-4 prior to stimulation with a ADORA1 receptor agonist, NECA. The intracellular calcium change was measured by FLIPR. The relative fluorescent units (RFU) were plotted against the log of the cumulative doses (5-fold dilution) of NECA (Mean  $\pm$  SD, n = 2). The EC50 of NECA on ADORA1 in CHO-K1 cells was 26.32 nM. The S/B of NECA on ADORA1 in CHO-K1 cells was 16.

**Caution**

For research use only. Not intended for household use. If you have any questions about the Certificate of Analysis, please contact our customer service representative at 1-877-436-7274 (Toll-Free), or 1-732-885-9188.

Certified by:  Date: 03/27/2018  
 Department of Biologics Development Director